

MAGNA RACK SL SERIES FRAME RACKS



MAGNA RACK SL

POWER & PERFORMANCE

The Magna Rack SL series of racks offer a feature set which customers have embraced in today's collision repair rack market place. It has an extended-height lifting capability for ergonomic working heights, an open front and rear for greater accessibility to the vehicle for repairs, a faster pinch-weld anchoring system with fewer bolts to secure it to the rack platform and 60% more chain tie-downs for efficient and timely vehicle tie backs.

KJ KANSAS JACK *Magna Rack 2.0 SL*

KJ KANSAS JACK *Magna Rack 2.2 SL*



Magna Rack 2.2 SL
3-Tower Configuration
KJ9014223

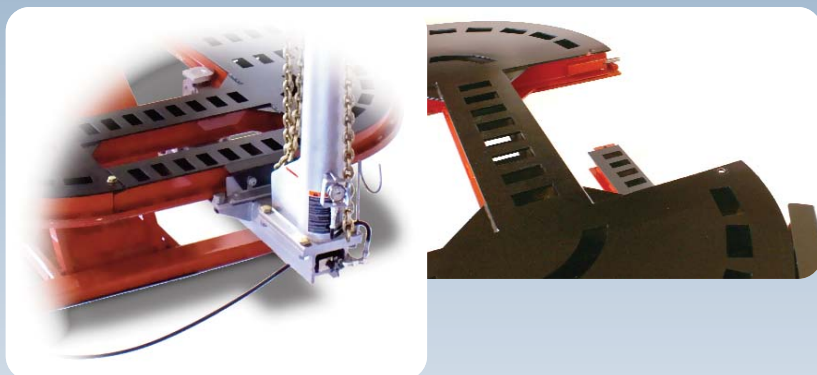
Specifications

	Magna Rack 2.0 SL	Magna Rack 2.2 SL
Rack Length:	20'	22'
Rack Max. Length (with towers):	24' 1"	26' 1"
Width of Rack:	88"	88"
Width of Rack (with towers):	11' 4"	11' 4"
Width of Treadway:	26 ½"	26 ½"
Center Opening Width:	35 ½"	35 ½"
Overall Height (towers down):	9' 1"	9' 1"
Overall Height (towers extended):	9' 11"	9' 11"
Tie-Downs:	222	244
8 Working Heights:	12" up to 42"	12" up to 42"
Power Requirement:	120V, 1Ph, 60Hz	120V, 1Ph, 60Hz

FEATURES

Front and Rear Removable Cross-Members

Perform a front-end pull removing mash, and then remove the cross-member to gain unrestricted access to the vehicle.



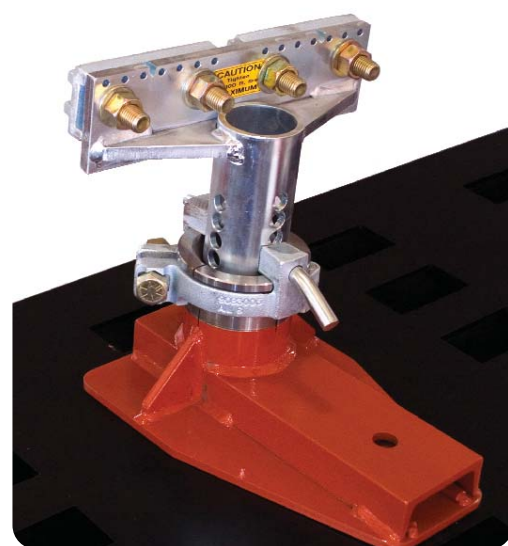
Electric-Hydraulic Couplers

Eight quick-connect electric-hydraulic couplers are conveniently located around the rack for efficient tower connections or for auxiliary hydraulic repair accessories. The couplers provide for a positive seal and allow for a safe, clean operating environment for your technicians.



Infinite Positioning of Pull Collars

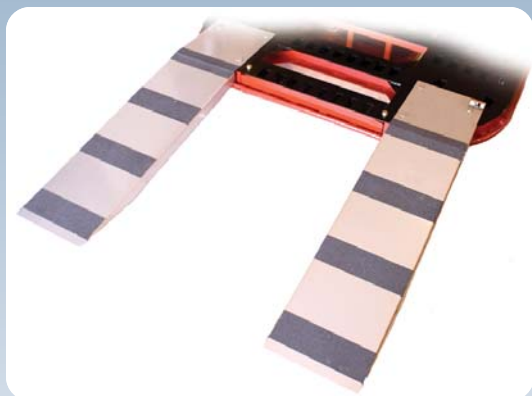
Variable-position pull collars provide for unlimited positioning for the correct alignment with the pull being made. Water-filled pressure gauges can be adjusted to provide the technician with the best line of sight when making 10 ton pulls at the hook.



Pinch-Weld Clamp

Pinch-Weld Clamp base secures to the rack with a single bolt reducing your vehicle set-up times.

NA RACK SL SERIES FRAMERACKS



Light-Weight Steel Ramps

For loading and off-loading the vehicle from the front or rear of the rack.



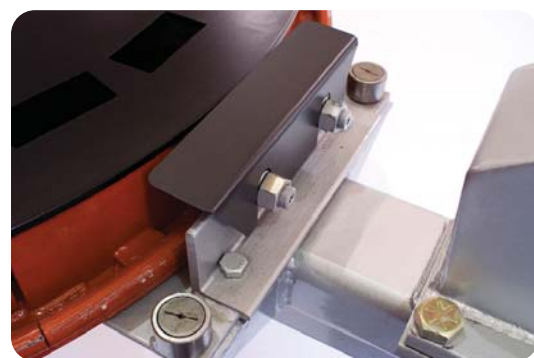
Working Heights

Eight working heights from 12" to 42" provide for one of the lowest working heights in the market. Adjustable working heights provide flexibility in properly positioning the vehicle at an optimum working height for ultimate productivity boosts!



Electric Pump

Elevated off of the ground and placed in a sound-proof metal enclosure with a push-button lock release located on top. Remote easily stores inside the enclosure when not in use.



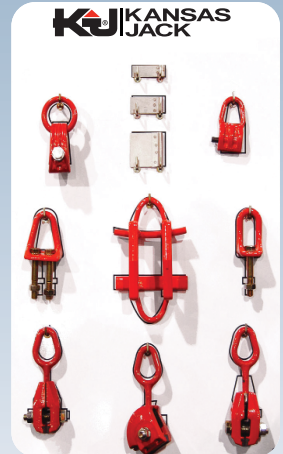
Towers with Integrated Bearings

Towers circumnavigate the rack platform on 6 bearings for a smooth effortless operation.

OPTIONAL ACCESSORIES

Standard Accessory Kit A1710102

Set Includes: 1 Self-Tightening Pull Clamp (Single-Bolt), 1 Side Pull Bracket (Single-Bolt), 1 Self-Tightening Pull Clamp (Double-Bolt), 1 Side Pull Bracket (Double-Bolt), 1 Self-Tightening/Multi-Angle Pull Clamp, 1 Small Fender Puller (Uneven Bars), 1 Self-Tightening O-Ring Pull Clamp, 1 Tac Clamp, 1 Tac Clamp Plate (3"), 1 Tac Clamp Plate (2"), 1 Tac Clamp Plate (1"), and Silhouette Tool Board



Deluxe Accessory Kit A1710103

Set Includes: All Standard Accessories (Listed Above), 1 McPherson Universal Strong Pulls (15 pieces), 1 Pulling Hook (Modular Assembly), 1 Pulling Hook Plate, 1 Frame Horn Plate, 1 Nylon Strap, 1 Cable Sling, 1 Pull Adapter (Regular Pull - Single Loop), 1 Pull Adapter (Regular Pull - Axial Pull), 4 Edge Clamps (Universal), and Silhouette Tool Board

Truck Tie-Down Board 9020026



Vehicle Loading Package

9020030 (Includes: Wench, Wheel Stands, Car Dollies, and 2 Bag Air Jack)

MAGNA RACK SL SERIES FRAMERACKS

Light-weight Drive-on/Drive-off Ramps

Provide drive-through capability

From 222 to 244 Tie-Downs

Efficient and timely vehicle tie-back, just drop the chain through deck and secure

Front & Rear Removable Cross-Members

Gain complete access to vehicle for repairs

Front & Rear Wheel Chocks

Prevents forward and backward movement of the vehicle

Leak-Free Quick-Connect Hydraulic Couplers

Allowing for a safe and clean work space

One-Bolt Pinch-Weld Base Clamping

Reduces vehicle setup time

Infinite-Positioning of Pull Collars

For the correct alignment of the pulls

9,900 lbs. Lifting Capacity

Lift the heaviest of vehicles

Specialty & Frame Anchoring Options

For BMW, Mercedes, Honda & frame vehicles



MAGNA RACK SL

AVAILABLE CONFIGURATIONS

	Part Number	Number of Towers	Shipping Weight
Magna Rack 2.0 SL	KJ9014202	2	6,200 lbs.
Magna Rack 2.0 SL	KJ9014203	3	6,800 lbs.
Magna Rack 2.0 SL	KJ9014204	4	7,400 lbs.
Magna Rack 2.2 SL	KJ9014222	2	6,620 lbs.
Magna Rack 2.2 SL	KJ9014223	3	7,220 lbs.
Magna Rack 2.2 SL	KJ9014224	4	7,820 lbs.